

DATA SHEET

74LVC16244A; 74LVCH16244A
16-bit buffer/line driver; 5 V
input/output tolerant; 3-state

Product specification
Supersedes data of 2003 Jan 30

2003 Dec 08

16-bit buffer/line driver; 5 V input/output tolerant; 3-state

74LVC16244A; 74LVCH16244A

FEATURES

- 5 V tolerant inputs/outputs for interfacing with 5 V logic
- Wide supply voltage range from 1.2 to 3.6 V
- CMOS low power consumption
- MULTIBYTE™ flow-through standard pin-out architecture
- Low inductance multiple power and ground pins for minimum noise and ground bounce
- Direct interface with TTL levels
- All data inputs have bushold (74LVCH16244A only).
- Complies with JEDEC standard no. 8-1A
- ESD protection:
HBM EIA/JESD22-A114-A exceeds 2000 V
MM EIA/JESD22-A115-A exceeds 200 V.
- Specified from –40 to +85 °C and –40 to +125 °C.

DESCRIPTION

The 74LVC(H)16244A is a high-performance, low power, low voltage, Si-gate CMOS device, superior to most advanced CMOS compatible TTL families. Inputs can be driven from either 3.3 or 5 V devices. In 3-state operation, outputs can handle 5 Volt. These features allow the use of these devices as a mixed 3.3 and 5 V environment.

The 74LVC(H)16244A is a 16-bit non-inverting buffer/line driver with 3-state outputs. The device can be used as four 4-bit buffers, two 8-bit buffers or one 16-bit buffer. The device features four Output Enables (1OE, 2OE, 3OE and 4OE), each controlling four of the 3-state outputs. A HIGH on nOE causes the outputs to assume a high-impedance OFF-state.

The 74LVC(H)16244A is identical to the 74LVC16240A but has non-inverting outputs.

The 74LVCH16244A bushold data inputs eliminates the need for external pull-up resistors to hold unused inputs.

QUICK REFERENCE DATA

GND = 0 V; T_{amb} = 25 °C; t_r = t_f ≤ 2.5 ns.

| SYMBOL | PARAMETER | CONDITIONS | TYPICAL | UNIT |
|------------------------------------|--|---|---------|------|
| t _{PHL} /t _{PLH} | propagation delay nAn to nYn | C _L = 50 pF; V _{CC} = 3.3 V | 3.0 | ns |
| t _{PZH} /t _{PZL} | 3-state output enable time nOE to nYn | C _L = 50 pF; V _{CC} = 3.3 V | 3.5 | ns |
| t _{PHZ} /t _{PLZ} | 3-state output disable time nOE to nYn | C _L = 50 pF; V _{CC} = 3.3 V | 3.7 | ns |
| C _I | input capacitance | | 5.0 | pF |
| C _{PD} | power dissipation capacitance per gate | V _{CC} = 3.3 V; notes 1 and 2 | | |
| | | outputs enabled | 12 | pF |
| | | outputs disabled | 4.0 | pF |

Notes

1. C_{PD} is used to determine the dynamic power dissipation (P_D in μW).

$$P_D = C_{PD} \times V_{CC}^2 \times f_i \times N + \Sigma(C_L \times V_{CC}^2 \times f_o) \text{ where:}$$

f_i = input frequency in MHz;

f_o = output frequency in MHz;

C_L = output load capacitance in pF;

V_{CC} = supply voltage in Volts;

N = total load switching outputs;

Σ(C_L × V_{CC}² × f_o) = sum of the outputs.

2. The condition is V_i = GND to V_{CC}.

16-bit buffer/line driver; 5 V input/output
tolerant; 3-state

74LVC16244A;
74LVCH16244A

FUNCTION TABLE

See note 1.

| INPUT | | OUTPUT |
|-------------------------|-----|--------|
| $\overline{\text{nOE}}$ | nAn | nYn |
| L | L | L |
| L | H | H |
| H | X | Z |

Note

1. H = HIGH voltage level;
L = LOW voltage level;
X = don't care;
Z = high-impedance OFF-state.

ORDERING INFORMATION

| TYPE NUMBER | PACKAGE | | | | |
|-----------------|-------------------|------|---------|----------|----------|
| | TEMPERATURE RANGE | PINS | PACKAGE | MATERIAL | CODE |
| 74LVC16244ADL | -40 to +125 °C | 48 | SSOP48 | plastic | SOT370-1 |
| 74LVCH16244ADL | -40 to +125 °C | 48 | SSOP48 | plastic | SOT370-1 |
| 74LVC16244ADGG | -40 to +125 °C | 48 | TSSOP48 | plastic | SOT362-1 |
| 74LVCH16244ADGG | -40 to +125 °C | 48 | TSSOP48 | plastic | SOT362-1 |
| 74LVC16244AEV | -40 to +125 °C | 56 | VFBGA56 | plastic | SOT702-1 |
| 74LVCH16244AEV | -40 to +125 °C | 56 | VFBGA56 | plastic | SOT702-1 |

16-bit buffer/line driver; 5 V input/output
tolerant; 3-state

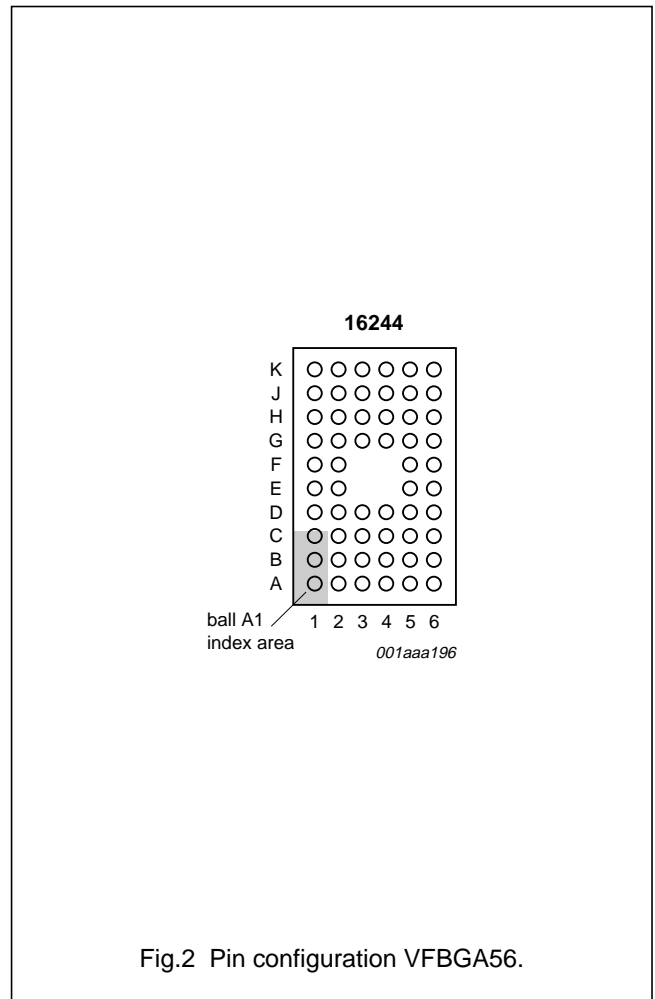
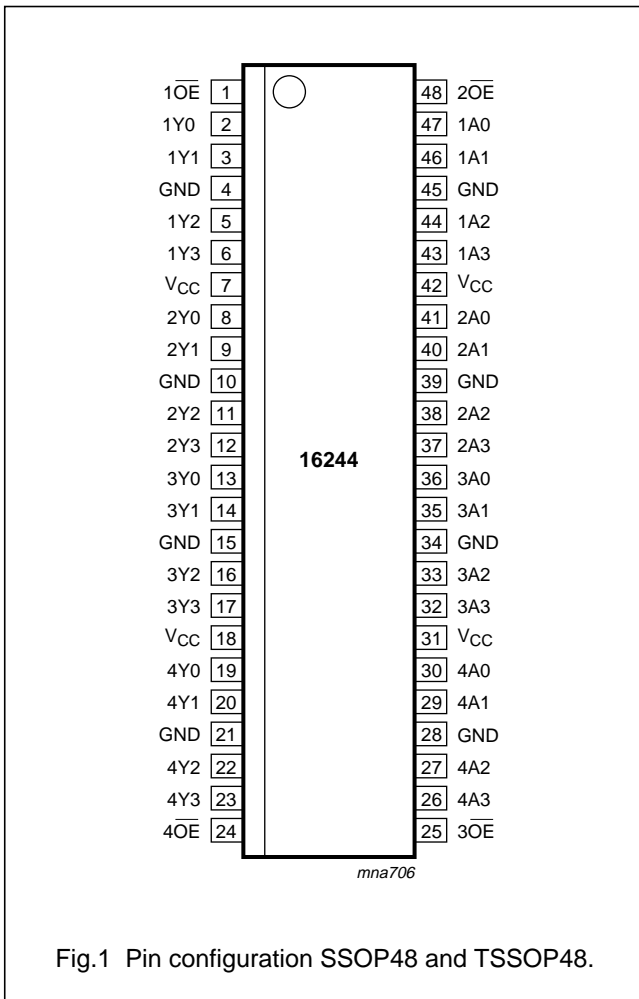
74LVC16244A;
74LVCH16244A

PINNING

| SYMBOL | PIN | BALL | DESCRIPTION |
|-------------------|-------------------------------|--------------------------------|----------------------------------|
| 1 \overline{OE} | 1 | A1 | output enable input (active LOW) |
| n.c. | – | A2, A3, A4, A5, K2, K3, K4, K5 | not connected |
| 1Y0 | 2 | B2 | data output |
| 1Y1 | 3 | B1 | data output |
| GND | 4, 10, 15, 21, 28, 34, 39, 45 | B3, B4, D3, D4, G3, G4, J3, J4 | ground (0 V) |
| 1Y2 | 5 | C2 | data output |
| 1Y3 | 6 | C1 | data output |
| V _{CC} | 7, 18, 31, 42 | C3, H3, C4, H4 | supply voltage |
| 2Y0 | 8 | D2 | data output |
| 2Y1 | 9 | D1 | data output |
| 2Y2 | 11 | E2 | data output |
| 2Y3 | 12 | E1 | data output |
| 3Y0 | 13 | F1 | data output |
| 3Y1 | 14 | F2 | data output |
| 3Y2 | 16 | G1 | data output |
| 3Y3 | 17 | G2 | data output |
| 4Y0 | 19 | H1 | data output |
| 4Y1 | 20 | H2 | data output |
| 4Y2 | 22 | J1 | data output |
| 4Y3 | 23 | J2 | data output |
| 4 \overline{OE} | 24 | K1 | output enable input (active LOW) |
| 3 \overline{OE} | 25 | K6 | output enable input (active LOW) |
| 4A3 | 26 | J5 | data input |
| 4A2 | 27 | J6 | data input |
| 4A1 | 29 | H5 | data input |
| 4A0 | 30 | H6 | data input |
| 3A3 | 32 | G5 | data input |
| 3A2 | 33 | G6 | data input |
| 3A1 | 35 | F5 | data input |
| 3A0 | 36 | F6 | data input |
| 2A3 | 37 | E6 | data input |
| 2A2 | 38 | E5 | data input |
| 2A1 | 40 | D6 | data input |
| 2A0 | 41 | D5 | data input |
| 1A3 | 43 | C6 | data input |
| 1A2 | 44 | C5 | data input |
| 1A1 | 46 | B6 | data input |
| 1A0 | 47 | B5 | data input |
| 2 \overline{OE} | 48 | A6 | output enable input (active LOW) |

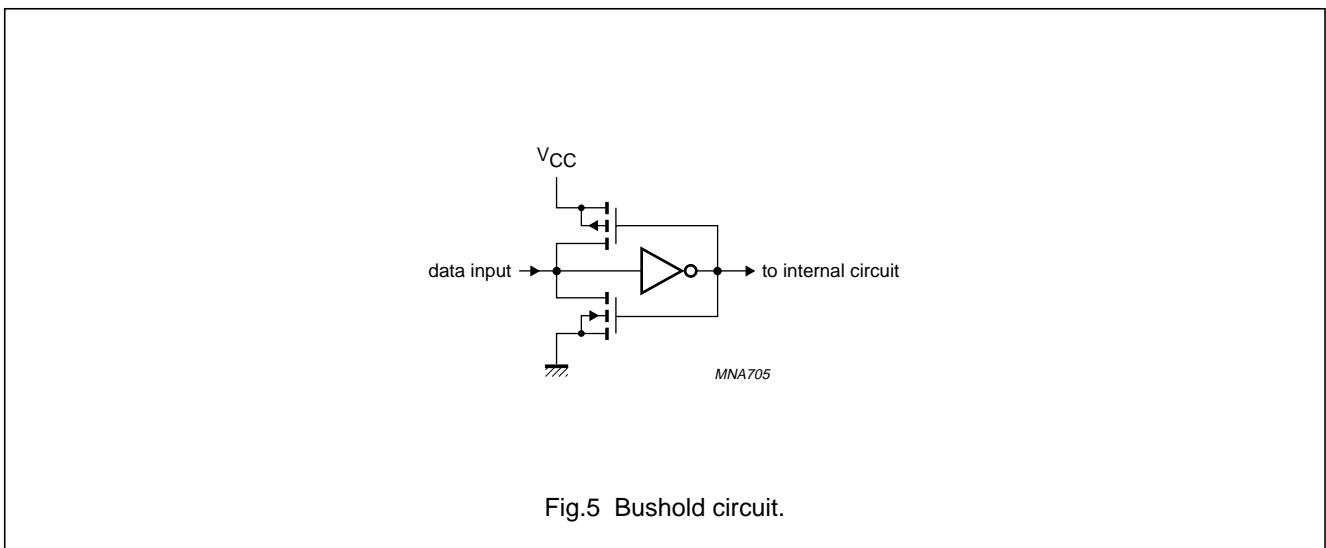
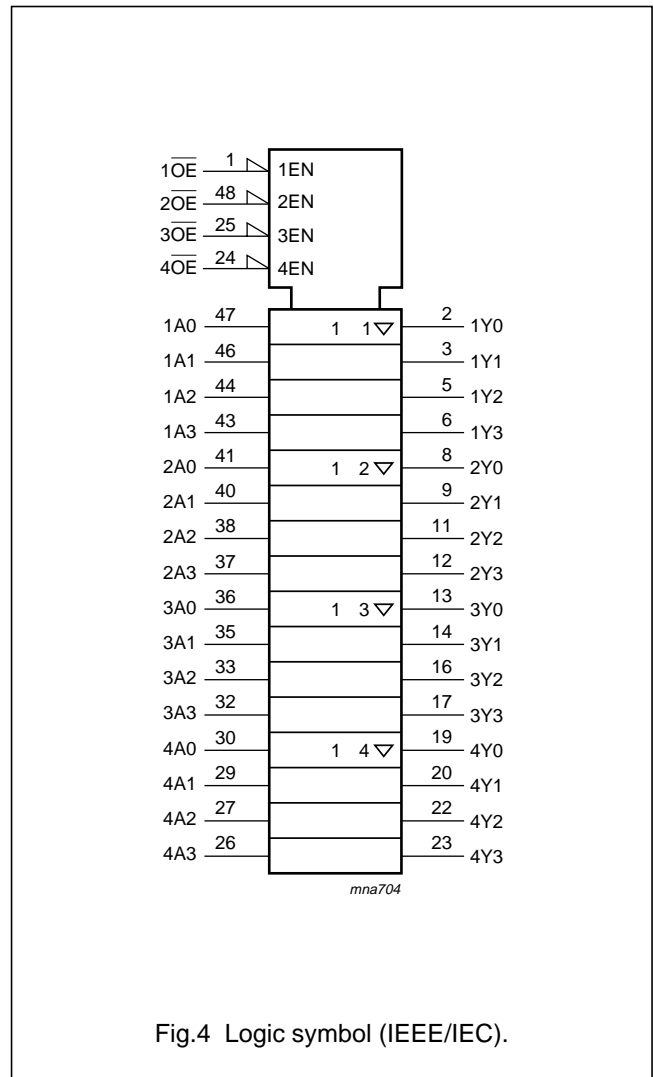
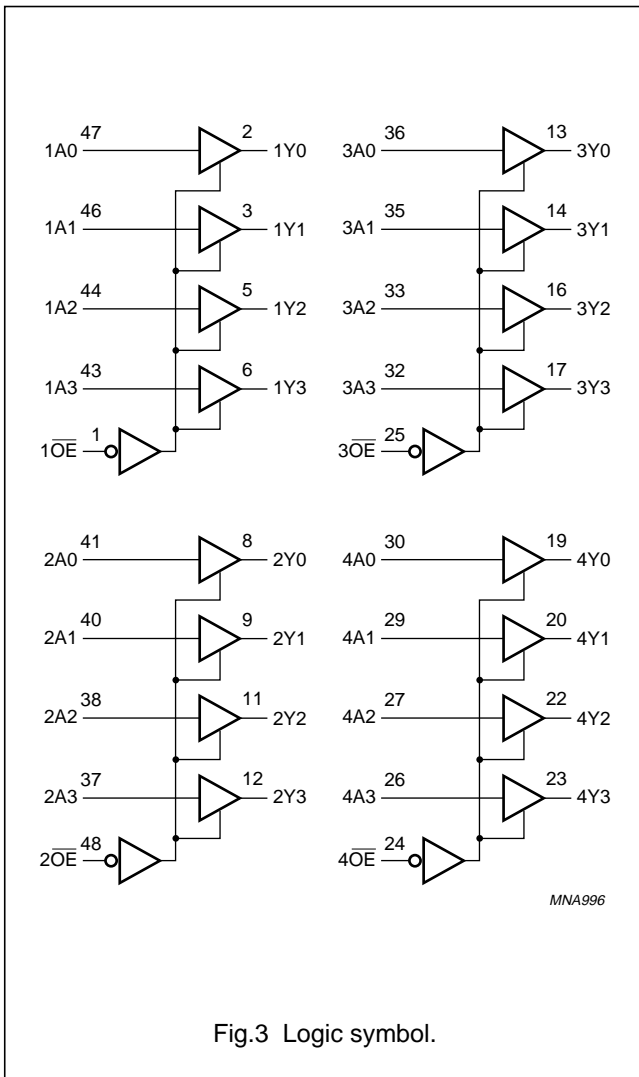
16-bit buffer/line driver; 5 V input/output tolerant; 3-state

74LVC16244A;
74LVCH16244A



16-bit buffer/line driver; 5 V input/output tolerant; 3-state

74LVC16244A;
74LVCH16244A



16-bit buffer/line driver; 5 V input/output
tolerant; 3-state

74LVC16244A;
74LVCH16244A

RECOMMENDED OPERATING CONDITIONS

| SYMBOL | PARAMETER | CONDITIONS | MIN. | MAX. | UNIT |
|------------|-------------------------------|-------------------------------|------|----------|------|
| V_{CC} | supply voltage | for maximum speed performance | 2.7 | 3.6 | V |
| | | for low voltage applications | 1.2 | 3.6 | V |
| V_I | input voltage | | 0 | 5.5 | V |
| V_O | output voltage | output HIGH or LOW state | 0 | V_{CC} | V |
| | | output 3-state | 0 | 5.5 | V |
| T_{amb} | operating ambient temperature | in free air | -40 | +125 | °C |
| t_r, t_f | input rise and fall times | $V_{CC} = 1.2$ to 2.7 V | 0 | 20 | ns/V |
| | | $V_{CC} = 2.7$ to 3.6 V | 0 | 10 | ns/V |

LIMITING VALUES

In accordance with the Absolute Maximum Rating System (IEC 60134); voltages are referenced to GND (ground = 0 V).

| SYMBOL | PARAMETER | CONDITIONS | MIN. | MAX. | UNIT |
|-------------------|--|--------------------------------------|------|----------------|------|
| V_{CC} | supply voltage | | -0.5 | +6.5 | V |
| I_{IK} | input diode current | $V_I < 0$ | - | -50 | mA |
| V_I | input voltage | note 1 | -0.5 | +6.5 | V |
| I_{OK} | output diode current | $V_O > V_{CC}$ or $V_O < 0$ | - | ±50 | mA |
| V_O | output voltage | output HIGH or LOW state; note 1 | -0.5 | $V_{CC} + 0.5$ | V |
| | | output 3-state; note 1 | -0.5 | +6.5 | V |
| I_O | output source or sink current | $V_O = 0$ to V_{CC} | - | ±50 | mA |
| I_{CC}, I_{GND} | V_{CC} or GND current | | - | ±100 | mA |
| T_{stg} | storage temperature | | -65 | +150 | °C |
| P_{tot} | power dissipation SSOP and TSSOP package VFPGA package | $T_{amb} = -40$ to $+125$ °C; note 2 | - | 500 | mW |
| | | $T_{amb} = -40$ to $+125$ °C; note 3 | - | 1000 | mW |

Notes

1. The input and output voltage ratings may be exceeded if the input and output current ratings are observed.
2. Above 60 °C the value of P_{tot} derates linearly with 5.5 mW/K.
3. Above 70 °C the value of P_{tot} derates linearly with 1.8 mW/K.

**16-bit buffer/line driver; 5 V input/output
tolerant; 3-state**
**74LVC16244A;
74LVCH16244A**
DC CHARACTERISTICS

At recommended operating conditions; voltages are referenced to GND (ground = 0 V).

| SYMBOL | PARAMETER | TEST CONDITIONS | | MIN. | TYP. | MAX. | UNIT |
|--|---|---|---------------------|-----------------------|-----------------|------|------|
| | | OTHER | V _{CC} (V) | | | | |
| T_{amb} = -40 to +85 °C; note 1 | | | | | | | |
| V _{IH} | HIGH-level input voltage | | 1.2 | V _{CC} | - | - | V |
| | | | 2.7 to 3.6 | 2.0 | - | - | V |
| V _{IL} | LOW-level input voltage | | 1.2 | - | - | 0 | V |
| | | | 2.7 to 3.6 | - | - | 0.8 | V |
| V _{OH} | HIGH-level output voltage | V _I = V _{IH} or V _{IL} I _O = -100 µA | 2.7 to 3.6 | V _{CC} - 0.2 | V _{CC} | - | V |
| | | I _O = -12 mA | 2.7 | V _{CC} - 0.5 | - | - | V |
| | | I _O = -18 mA | 3.0 | V _{CC} - 0.6 | - | - | V |
| | | I _O = -24 mA | 3.0 | V _{CC} - 0.8 | - | - | V |
| V _{OL} | LOW-level output voltage | V _I = V _{IH} or V _{IL} I _O = 100 µA | 2.7 to 3.6 | - | 0 | 0.20 | V |
| | | I _O = 12 mA | 2.7 | - | - | 0.40 | V |
| | | I _O = 24 mA | 3.0 | - | - | 0.55 | V |
| I _{LI} | input leakage current | V _I = 5.5 V or GND; note 2 | 3.6 | - | ±0.1 | ±5 | µA |
| I _{OZ} | 3-state output OFF-state current | V _I = V _{IH} or V _{IL} ; V _O = 5.5 V or GND; note 2 | 3.6 | - | 0.1 | ±5 | µA |
| I _{off} | power-off leakage supply current | V _I or V _O = 5.5 V | 0.0 | - | 0.1 | ±10 | µA |
| I _{CC} | quiescent supply current | V _I = V _{CC} or GND; I _O = 0 | 3.6 | - | 0.1 | 20 | µA |
| ΔI _{CC} | additional quiescent supply current per input pin | V _I = V _{CC} - 0.6 V; I _O = 0 | 2.7 to 3.6 | - | 5 | 500 | µA |
| I _{BH} | bushold LOW sustaining current | V _I = 0.8 V; notes 3 and 4 | 3.0 | 75 | - | - | µA |
| I _{BHH} | bushold HIGH sustaining current | V _I = 2.0 V; notes 3 and 4 | 3.0 | -75 | - | - | µA |
| I _{BHLO} | bushold LOW overdrive current | notes 3 and 5 | 3.6 | 500 | - | - | µA |
| I _{BHHO} | bushold HIGH overdrive current | notes 3 and 5 | 3.6 | -500 | - | - | µA |

16-bit buffer/line driver; 5 V input/output tolerant; 3-state

74LVC16244A;
74LVCH16244A

| SYMBOL | PARAMETER | TEST CONDITIONS | | MIN. | TYP. | MAX. | UNIT |
|---|---|---|---------------------|------------------------|------|------|------|
| | | OTHER | V _{CC} (V) | | | | |
| T_{amb} = -40 to +125 °C | | | | | | | |
| V _{IH} | HIGH-level input voltage | | 1.2 | V _{CC} | - | - | V |
| | | | 2.7 to 3.6 | 2.0 | - | - | V |
| V _{IL} | LOW-level input voltage | | 1.2 | - | - | 0 | V |
| | | | 2.7 to 3.6 | - | - | 0.8 | V |
| V _{OH} | HIGH-level output voltage | V _I = V _{IH} or V _{IL} | 2.7 to 3.6 | V _{CC} - 0.3 | - | - | V |
| | | I _O = -100 μA | 2.7 | V _{CC} - 0.65 | - | - | V |
| | | I _O = -12 mA | 3.0 | V _{CC} - 0.75 | - | - | V |
| | | I _O = -18 mA | 3.0 | V _{CC} - 1 | - | - | V |
| V _{OL} | LOW-level output voltage | V _I = V _{IH} or V _{IL} | 2.7 to 3.6 | - | - | 0.3 | V |
| | | I _O = 100 μA | 2.7 | - | - | 0.6 | V |
| | | I _O = 12 mA | 3.0 | - | - | 0.8 | V |
| | | I _O = 24 mA | 3.0 | - | - | 0.8 | V |
| I _{LI} | input leakage current | V _I = 5.5 V or GND; note 2 | 3.6 | - | - | ±20 | μA |
| I _{OZ} | 3-state output OFF-state current | V _I = V _{IH} or V _{IL} ; V _O = 5.5 V or GND; note 2 | 3.6 | - | - | ±20 | μA |
| I _{off} | power-off leakage supply current | V _I or V _O = 5.5 V | 0.0 | - | - | ±20 | μA |
| I _{CC} | quiescent supply current | V _I = V _{CC} or GND; I _O = 0 | 3.6 | - | - | 80 | μA |
| ΔI _{CC} | additional quiescent supply current per input pin | V _I = V _{CC} - 0.6 V; I _O = 0 | 2.7 to 3.6 | - | - | 5000 | μA |
| I _{BH} | bushold LOW sustaining current | V _I = 0.8 V; notes 3 and 4 | 3.0 | 60 | - | - | μA |
| I _{BHH} | bushold HIGH sustaining current | V _I = 2.0 V; notes 3 and 4 | 3.0 | -60 | - | - | μA |
| I _{BHLO} | bushold LOW overdrive current | notes 3 and 5 | 3.6 | 500 | - | - | μA |
| I _{BHHO} | bushold HIGH overdrive current | notes 3 and 5 | 3.6 | -500 | - | - | μA |

Notes

1. All typical values are measured at V_{CC} = 3.3 V and T_{amb} = 25 °C.
2. For bushold parts, the bushold circuit is switched off when V_I > V_{CC} allowing 5.5 V on the input pin.
3. Valid for data inputs of bushold parts (74LVCH16244A) only. For data inputs only, control inputs do not have a bushold circuit.
4. The specified sustaining current at the data inputs holds the input below the specified V_I level.
5. The specified overdrive current at the data input forces the data input to the opposite logic input state.

16-bit buffer/line driver; 5 V input/output
tolerant; 3-state

74LVC16244A;
74LVCH16244A

AC CHARACTERISTICS

GND = 0 V; $t_r = t_f \leq 2.5$ ns; $C_L = 50$ pF; $R_L = 500$ Ω .

| SYMBOL | PARAMETER | CONDITIONS | | MIN. | TYP. | MAX. | UNIT |
|---|--|------------------|---------------------|------|--------------------|------|------|
| | | WAVEFORMS | V _{CC} (V) | | | | |
| T_{amb} = -40 to +85 °C; note1 | | | | | | | |
| t _{PHL} /t _{PLH} | propagation delay nAn to nYn | see Figs 6 and 8 | 1.2 | – | 11.0 | – | ns |
| | | | 2.7 | 1.0 | – | 4.7 | ns |
| | | | 3.0 to 3.6 | 1.1 | 3.0 ⁽²⁾ | 4.1 | ns |
| t _{PZH} /t _{PZL} | 3-state output enable time n \overline{OE} to nYn | see Figs 7 and 8 | 1.2 | – | 15.0 | – | ns |
| | | | 2.7 | 1.0 | – | 5.8 | ns |
| | | | 3.0 to 3.6 | 1.0 | 3.5 ⁽²⁾ | 4.6 | ns |
| t _{PHZ} /t _{PLZ} | 3-state output disable time n \overline{OE} to nYn | see Figs 7 and 8 | 1.2 | – | 10.0 | – | ns |
| | | | 2.7 | 1.0 | – | 6.2 | ns |
| | | | 3.0 to 3.6 | 1.8 | 3.7 ⁽²⁾ | 5.2 | ns |
| T_{amb} = -40 to +125 °C | | | | | | | |
| t _{PHL} /t _{PLH} | propagation delay nAn to nYn | see Figs 6 and 8 | 1.2 | – | – | – | ns |
| | | | 2.7 | 1.0 | – | 6.0 | ns |
| | | | 3.0 to 3.6 | 1.1 | – | 5.5 | ns |
| t _{PZH} /t _{PZL} | 3-state output enable time n \overline{OE} to nYn | see Figs 7 and 8 | 1.2 | – | – | – | ns |
| | | | 2.7 | 1.0 | – | 7.5 | ns |
| | | | 3.0 to 3.6 | 1.0 | – | 6.0 | ns |
| t _{PHZ} /t _{PLZ} | 3-state output disable time n \overline{OE} to nYn | see Figs 7 and 8 | 1.2 | – | – | – | ns |
| | | | 2.7 | 1.0 | – | 8.0 | ns |
| | | | 3.0 to 3.6 | 1.8 | – | 6.5 | ns |

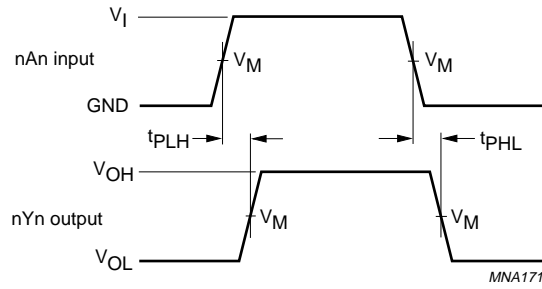
Notes

1. All typical values are measured at T_{amb} = 25 °C.
2. These typical values are measured at V_{CC} = 3.3 V and T_{amb} = 25 °C.

16-bit buffer/line driver; 5 V input/output tolerant; 3-state

74LVC16244A;
74LVCH16244A

AC WAVEFORMS



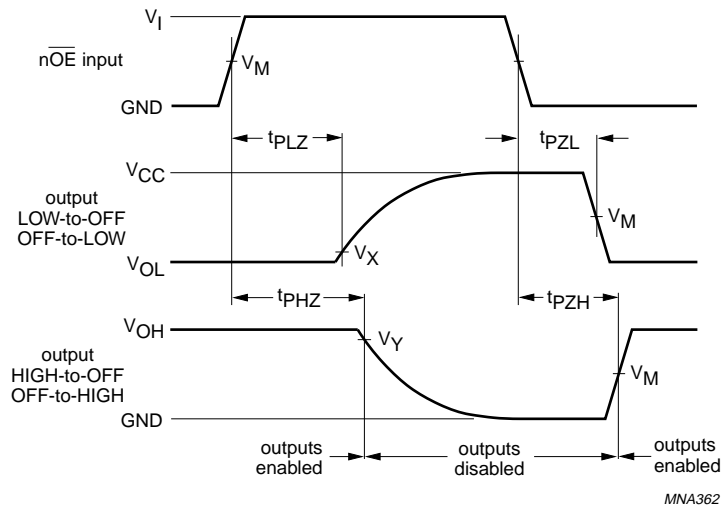
| V _{CC} | V _M | INPUT | |
|-----------------|-----------------------|-----------------|---------------------------------|
| | | V _I | t _r = t _f |
| 1.2 V | 0.5 × V _{CC} | V _{CC} | ≤ 2.5 ns |
| 2.7 V | 1.5 V | 2.7 V | ≤ 2.5 ns |
| 3.0 to 3.6 V | 1.5 V | 2.7 V | ≤ 2.5 ns |

V_{OL} and V_{OH} are typical output voltage drop that occur with the output load.

Fig.6 The input nAn to output nYn propagation delays.

16-bit buffer/line driver; 5 V input/output tolerant; 3-state

74LVC16244A;
74LVCH16244A



| V _{CC} | V _M | INPUT | |
|-----------------|-----------------------|-----------------|---------------------------------|
| | | V _I | t _r = t _f |
| 1.2 V | 0.5 × V _{CC} | V _{CC} | ≤ 2.5 ns |
| 2.7 V | 1.5 V | 2.7 V | ≤ 2.5 ns |
| 3.0 to 3.6 V | 1.5 V | 2.7 V | ≤ 2.5 ns |

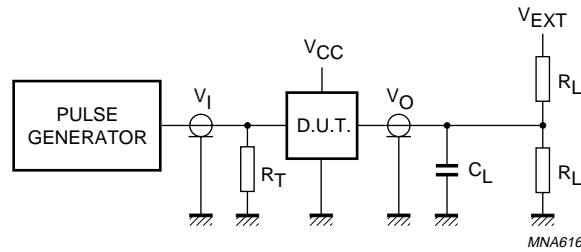
V_X = V_{OL} + 0.3 V at V_{CC} ≥ 2.7 V;
 V_X = V_{OL} + 0.1 V at V_{CC} < 2.7 V;
 V_Y = V_{OH} - 0.3 V at V_{CC} ≥ 2.7 V;
 V_Y = V_{OH} - 0.1 V at V_{CC} < 2.7 V.

V_{OL} and V_{OH} are typical output voltage drop that occur with the output load.

Fig.7 3-state enable and disable times.

16-bit buffer/line driver; 5 V input/output tolerant; 3-state

74LVC16244A;
74LVCH16244A



| V _{CC} | V _I | C _L | R _L | V _{EXT} | | |
|-----------------|-----------------|----------------|----------------------|------------------------------------|------------------------------------|------------------------------------|
| | | | | t _{PLH} /t _{PHL} | t _{PZH} /t _{PHZ} | t _{PZL} /t _{PLZ} |
| 1.2 V | V _{CC} | 50 pF | 500 Ω ⁽¹⁾ | open | GND | 2 × V _{CC} |
| 2.7 V | 2.7 V | 50 pF | 500 Ω | open | GND | 2 × V _{CC} |
| 3.0 to 3.6 V | 2.7 V | 50 pF | 500 Ω | open | GND | 2 × V _{CC} |

Note

- The circuit performs better when R_L = 1000 Ω.

Definitions for test circuits:

R_L = Load resistor.

C_L = Load capacitance including jig and probe capacitance.

R_T = Termination resistance should be equal to the output impedance Z_o of the pulse generator.

Fig.8 Load circuitry for switching times.

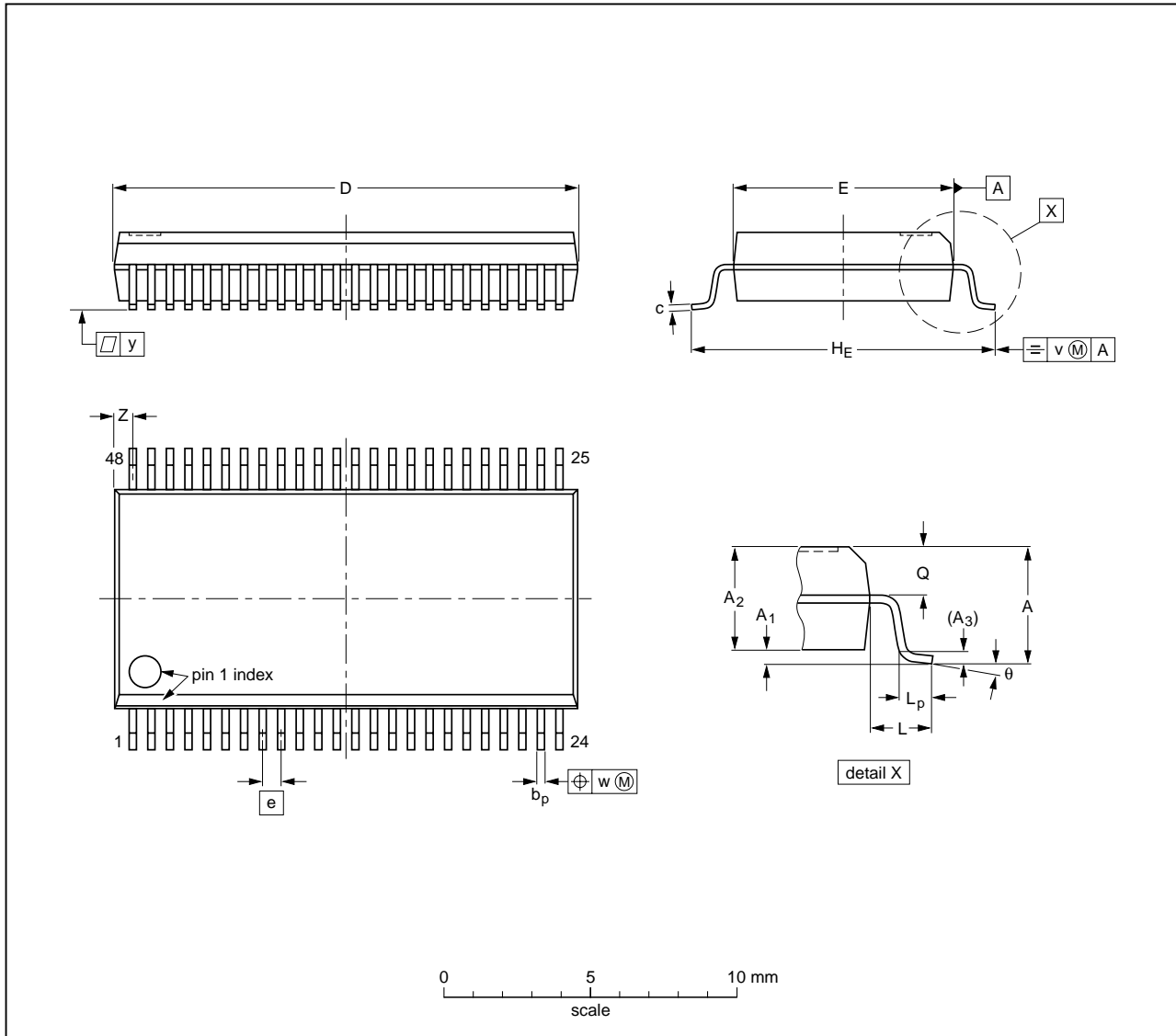
16-bit buffer/line driver; 5 V input/output tolerant; 3-state

74LVC16244A;
74LVCH16244A

PACKAGE OUTLINES

SSOP48: plastic shrink small outline package; 48 leads; body width 7.5 mm

SOT370-1



DIMENSIONS (mm are the original dimensions)

| UNIT | A max. | A ₁ | A ₂ | A ₃ | b _p | c | D ⁽¹⁾ | E ⁽¹⁾ | e | H _E | L | L _p | Q | v | w | y | z ⁽¹⁾ | θ |
|------|--------|----------------|----------------|----------------|----------------|--------------|------------------|------------------|-------|----------------|-----|----------------|------------|------|------|-----|------------------|----------|
| mm | 2.8 | 0.4 0.2 | 2.35 2.20 | 0.25 | 0.3 0.2 | 0.22 0.13 | 16.00 15.75 | 7.6 7.4 | 0.635 | 10.4 10.1 | 1.4 | 1.0 0.6 | 1.2 1.0 | 0.25 | 0.18 | 0.1 | 0.85 0.40 | 8° 0° |

Note
1. Plastic or metal protrusions of 0.25 mm maximum per side are not included.

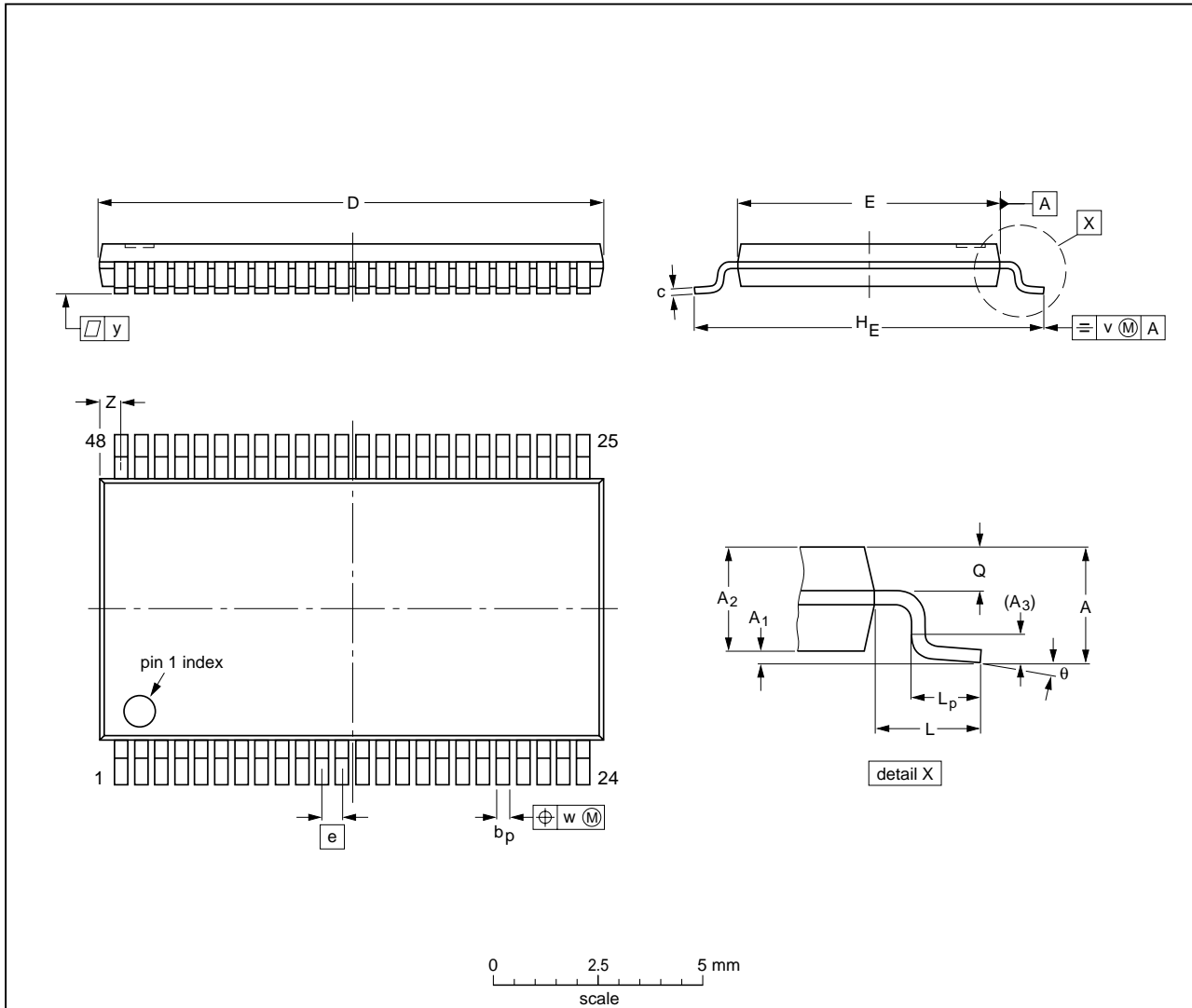
| OUTLINE VERSION | REFERENCES | | | EUROPEAN PROJECTION | ISSUE DATE |
|-----------------|------------|--------|-------|---------------------|----------------------|
| | IEC | JEDEC | JEITA | | |
| SOT370-1 | | MO-118 | | | 99-12-27 03-02-19 |

16-bit buffer/line driver; 5 V input/output tolerant; 3-state

74LVC16244A;
74LVCH16244A

TSSOP48: plastic thin shrink small outline package; 48 leads; body width 6.1 mm

SOT362-1



DIMENSIONS (mm are the original dimensions).

| UNIT | A max. | A ₁ | A ₂ | A ₃ | b _p | c | D ⁽¹⁾ | E ⁽²⁾ | e | H _E | L | L _p | Q | v | w | y | Z | θ |
|------|--------|----------------|----------------|----------------|----------------|------------|------------------|------------------|-----|----------------|---|----------------|--------------|------|------|-----|------------|----------|
| mm | 1.2 | 0.15 0.05 | 1.05 0.85 | 0.25 | 0.28 0.17 | 0.2 0.1 | 12.6 12.4 | 6.2 6.0 | 0.5 | 8.3 7.9 | 1 | 0.8 0.4 | 0.50 0.35 | 0.25 | 0.08 | 0.1 | 0.8 0.4 | 8° 0° |

Notes

1. Plastic or metal protrusions of 0.15 mm maximum per side are not included.
2. Plastic interlead protrusions of 0.25 mm maximum per side are not included.

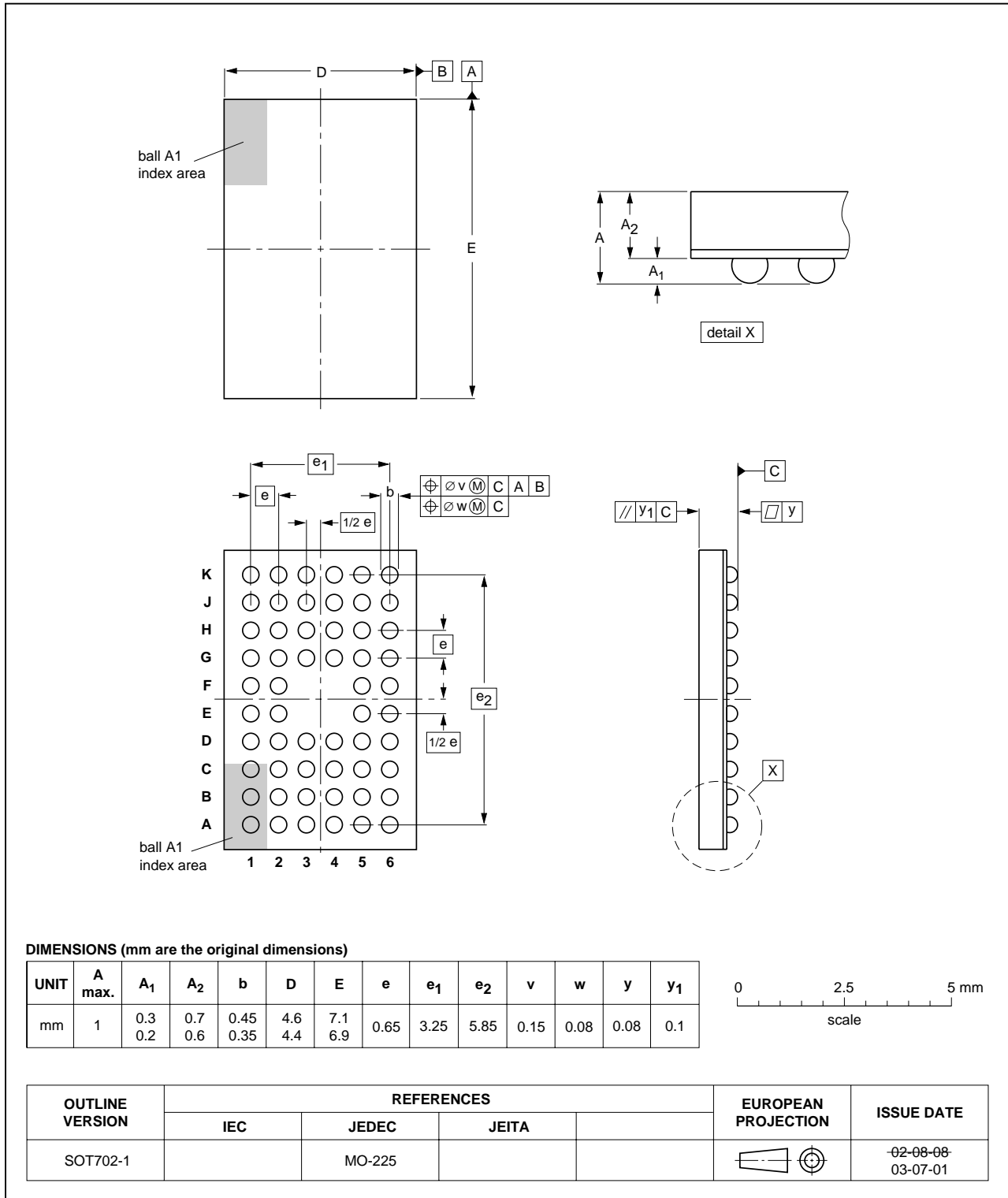
| OUTLINE VERSION | REFERENCES | | | EUROPEAN PROJECTION | ISSUE DATE |
|-----------------|------------|--------|-------|---------------------|----------------------|
| | IEC | JEDEC | JEITA | | |
| SOT362-1 | | MO-153 | | | 99-12-27 03-02-19 |

16-bit buffer/line driver; 5 V input/output tolerant; 3-state

74LVC16244A;
74LVCH16244A

VFBGA56: plastic very thin fine-pitch ball grid array package; 56 balls; body 4.5 x 7 x 0.65 mm

SOT702-1



16-bit buffer/line driver; 5 V input/output
tolerant; 3-state

74LVC16244A;
74LVCH16244A

DATA SHEET STATUS

| LEVEL | DATA SHEET STATUS ⁽¹⁾ | PRODUCT STATUS ⁽²⁾⁽³⁾ | DEFINITION |
|-------|----------------------------------|----------------------------------|--|
| I | Objective data | Development | This data sheet contains data from the objective specification for product development. Philips Semiconductors reserves the right to change the specification in any manner without notice. |
| II | Preliminary data | Qualification | This data sheet contains data from the preliminary specification. Supplementary data will be published at a later date. Philips Semiconductors reserves the right to change the specification without notice, in order to improve the design and supply the best possible product. |
| III | Product data | Production | This data sheet contains data from the product specification. Philips Semiconductors reserves the right to make changes at any time in order to improve the design, manufacturing and supply. Relevant changes will be communicated via a Customer Product/Process Change Notification (CPCN). |

Notes

1. Please consult the most recently issued data sheet before initiating or completing a design.
2. The product status of the device(s) described in this data sheet may have changed since this data sheet was published. The latest information is available on the Internet at URL <http://www.semiconductors.philips.com>.
3. For data sheets describing multiple type numbers, the highest-level product status determines the data sheet status.

DEFINITIONS

Short-form specification — The data in a short-form specification is extracted from a full data sheet with the same type number and title. For detailed information see the relevant data sheet or data handbook.

Limiting values definition — Limiting values given are in accordance with the Absolute Maximum Rating System (IEC 60134). Stress above one or more of the limiting values may cause permanent damage to the device. These are stress ratings only and operation of the device at these or at any other conditions above those given in the Characteristics sections of the specification is not implied. Exposure to limiting values for extended periods may affect device reliability.

Application information — Applications that are described herein for any of these products are for illustrative purposes only. Philips Semiconductors make no representation or warranty that such applications will be suitable for the specified use without further testing or modification.

DISCLAIMERS

Life support applications — These products are not designed for use in life support appliances, devices, or systems where malfunction of these products can reasonably be expected to result in personal injury. Philips Semiconductors customers using or selling these products for use in such applications do so at their own risk and agree to fully indemnify Philips Semiconductors for any damages resulting from such application.

Right to make changes — Philips Semiconductors reserves the right to make changes in the products - including circuits, standard cells, and/or software - described or contained herein in order to improve design and/or performance. When the product is in full production (status 'Production'), relevant changes will be communicated via a Customer Product/Process Change Notification (CPCN). Philips Semiconductors assumes no responsibility or liability for the use of any of these products, conveys no licence or title under any patent, copyright, or mask work right to these products, and makes no representations or warranties that these products are free from patent, copyright, or mask work right infringement, unless otherwise specified.

Philips Semiconductors – a worldwide company

Contact information

For additional information please visit <http://www.semiconductors.philips.com>. Fax: +31 40 27 24825

For sales offices addresses send e-mail to: sales.addresses@www.semiconductors.philips.com.

© Koninklijke Philips Electronics N.V. 2003

SCA75

All rights are reserved. Reproduction in whole or in part is prohibited without the prior written consent of the copyright owner.

The information presented in this document does not form part of any quotation or contract, is believed to be accurate and reliable and may be changed without notice. No liability will be accepted by the publisher for any consequence of its use. Publication thereof does not convey nor imply any license under patent- or other industrial or intellectual property rights.

Printed in The Netherlands

R20/07/pp18

Date of release: 2003 Dec 08

Document order number: 9397 750 12369

Let's make things better.

**Philips
Semiconductors**



PHILIPS



Home About NXP News Careers Investors Order/buy Support Contact my.NXP

Select site:

Search

[Advanced search / Selection guides](#)

Products Logic Buffers/drivers **Buffers/drivers: others**

Applications Looking for

74LVC16244A; 74LVCH16244A

[Preview](#)

[Product information](#) **i**

[Selection guide](#)

See also

Datasheet



**74LVC16244A;
74LVCH16244A**
(Product Specification)
08-Dec-03, 18 Pages,
117kB

[Download datasheet](#)
[Download all documentation](#)

74LVC16244A; 74LVCH16244A - 16-bit buffer/line driver; 5 V input/output tolerant; 3-state

[General description](#)

[Features](#)

[Products/packages](#)

[Quality/reliability/chemical content](#)

[Pricing/ordering/availability](#)

[Samples](#)

[Discontinued information](#)

[Applications](#)

[Block diagrams/pinning](#)

[Design support](#)

[Parametrics/similar products](#)

[Print/email](#)

[Disclaimers](#)

All information hereunder is subject to the subsequent disclaimers

[See the answers to FAQ's on certain fields of interest](#)

[Find NXP's equivalent of a competitor's part number](#)

[View case studies on general applications or technologies](#)

[Request contact with a technical expert](#)

[Find more information on NXP's Vision](#)

[Find out more about our ordering process](#)

[Receive e-news on specific interest areas](#)

General description

[Hide](#)

The 74LVC(H)16244A is a high-performance, low power, low voltage, Si-gate CMOS device, superior to most advanced CMOS compatible TTL families. Inputs can be driven from either 3.3 or 5 V devices. In 3-state operation, outputs can handle 5 Volt. These features allow the use of these devices as a mixed 3.3 and 5 V environment.

The 74LVC(H)16244A is a 16-bit non-inverting buffer/line driver with 3-state outputs. The device can be used as four 4-bit buffers, two 8-bit buffers or one 16-bit buffer. The device features four Output Enables (1OE, 2OE, 3OE and 4OE), each controlling four of the 3-state outputs. A HIGH on nOE causes the outputs to assume a high-impedance OFF-state.

The 74LVC(H)16244A is identical to the 74LVC16240A but has non-inverting outputs.

The 74LVCH16244A bushold data inputs eliminates the need for external pull-up resistors to hold unused inputs.

[Back to top](#)

Features

[Hide](#)

- 5 V tolerant inputs/outputs for interfacing with 5 V logic
- Wide supply voltage range from 1.2 to 3.6 V
- CMOS low power consumption
- MULTIBYTE™ flow-through standard pin-out architecture
- Low inductance multiple power and ground pins for minimum noise and ground bounce
- Direct interface with TTL levels
- All data inputs have bushold (74LVCH16244A only).
- Complies with JEDEC standard no. 8-1A
- ESD protection:
 - HBM EIA/JESD22-A114-A exceeds 2000 V
 - MM EIA/JESD22-A115-A exceeds 200 V.
- Specified from -40 to +85 Cel and -40 to +125 Cel.

[Back to top](#)

Products/packages

[Hide](#)

| Type number | Orderable part number | Ordering code (12NC) | Product status | Package | Packing | Marking | ECCN |
|-----------------|-----------------------|----------------------|-------------------|--------------------|-------------------------------|------------------|------|
| 74LVC16244ADGG | 74LVC16244ADGG,112 | 9352 351 50112 | Volume production | SOT362-1 (TSSOP48) | Tube | Standard Marking | |
| 74LVC16244ADGG | 74LVC16244ADGG,118 | 9352 351 50118 | Volume production | SOT362-1 (TSSOP48) | Reel Pack, SMD, 13" | Standard Marking | |
| 74LVC16244ADL | 74LVC16244ADL,112 | 9352 351 40112 | Volume production | SOT370-1 (SSOP48) | Tube | Standard Marking | |
| 74LVC16244ADL | 74LVC16244ADL,118 | 9352 351 40118 | Volume production | SOT370-1 (SSOP48) | Tape reel smd | Standard Marking | |
| 74LVC16244AEV | 74LVC16244AEV,118 | 9352 719 37118 | Volume production | SOT702-1 (VFBGA56) | Reel Pack, SMD, 13" | Standard Marking | |
| 74LVC16244AEV | 74LVC16244AEV,151 | 9352 719 37151 | Volume production | SOT702-1 (VFBGA56) | Tray Pack, Bakeable, Single | Standard Marking | |
| 74LVC16244AEV | 74LVC16244AEV,157 | 9352 719 37157 | Volume production | SOT702-1 (VFBGA56) | Tray Pack, Bakeable, Multiple | Standard Marking | |
| 74LVCH16244ADGG | 74LVCH16244ADGG:11 | 9352 384 50112 | Volume production | SOT362-1 (TSSOP48) | Tube | Standard Marking | |
| 74LVCH16244ADGG | 74LVCH16244ADGG,11 | 9352 384 50118 | Volume production | SOT362-1 (TSSOP48) | Reel Pack, SMD, 13" | Standard Marking | |
| 74LVCH16244ADL | 74LVCH16244ADL,112 | 9352 384 40112 | Volume production | SOT370-1 (SSOP48) | Tube | Standard Marking | |
| 74LVCH16244ADL | 74LVCH16244ADL,118 | 9352 384 40118 | Volume production | SOT370-1 (SSOP48) | Tape reel smd | Standard Marking | |
| 74LVCH16244AEV | 74LVCH16244AEV,118 | 9352 707 92118 | Volume production | SOT702-1 (VFBGA56) | Reel Pack, SMD, 13" | Standard Marking | |
| 74LVCH16244AEV | 74LVCH16244AEV,151 | 9352 707 92151 | Volume production | SOT702-1 (VFBGA56) | Tray Pack, Bakeable, Single | Standard Marking | |
| 74LVCH16244AEV | 74LVCH16244AEV,157 | 9352 707 92157 | Volume production | SOT702-1 (VFBGA56) | Tray Pack, Bakeable, Multiple | Standard Marking | |

The variants in the table below are discontinued. See the table [Discontinued information](#) for more information.

| Type number | Orderable part number | Ordering code (12NC) | Product status | Package | Packing | Marking | ECCN |
|-----------------|-----------------------|----------------------|-------------------------------------|--------------------|-------------------------|------------------|------|
| 74LVC16244ADGG | 74LVC16244ADGG,518 | 9352 351 50518 | Discontinued Replacement product | SOT362-1 (TSSOP48) | Reel Dry Pack, SMD, 13" | Standard Marking | |
| 74LVC16244ADGG | 74LVC16244ADGG,512 | 9352 351 50512 | Discontinued Replacement product | SOT362-1 (TSSOP48) | Tube Dry Pack | Standard Marking | |
| 74LVCH16244ADGG | 74LVCH16244ADGG:51 | 9352 384 50518 | Discontinued Replacement product | SOT362-1 (TSSOP48) | Reel Dry Pack, SMD, 13" | Standard Marking | |
| 74LVCH16244ADGG | 74LVCH16244ADGG,51 | 9352 384 50512 | Discontinued Replacement product | SOT362-1 (TSSOP48) | Tube Dry Pack | Standard Marking | |

[Back to top](#)

Quality/reliability/chemical content

[Hide](#)

| | | | | | | | |
|--|--|--|--|--|--|--|--|
| | | | | | | | |
|--|--|--|--|--|--|--|--|

| Type number | Orderable part number | Chemical content | RoHS | Leadfree conversion date | RHF | IFR (FIT) | MTBF (hours) | MSL |
|-----------------|-----------------------|------------------|------|--------------------------|-----|-----------|--------------|-----|
| 74LVC16244ADGG | 74LVC16244ADGG,112 | 74LVC16244ADGG | | Always Pb-free | | 3,87 | 2,58E+08 | 1 |
| 74LVC16244ADGG | 74LVC16244ADGG,118 | 74LVC16244ADGG | | Always Pb-free | | 3,87 | 2,58E+08 | 1 |
| 74LVC16244ADL | 74LVC16244ADL,112 | 74LVC16244ADL | | week 13, 2005 | | 3,87 | 2,58E+08 | 1 |
| 74LVC16244ADL | 74LVC16244ADL,118 | 74LVC16244ADL | | week 13, 2005 | | 3,87 | 2,58E+08 | 1 |
| 74LVC16244AEV | 74LVC16244AEV,118 | 74LVC16244AEV | | | | 3,87 | 2,58E+08 | 2 |
| 74LVC16244AEV | 74LVC16244AEV,151 | 74LVC16244AEV | | | | 3,87 | 2,58E+08 | 2 |
| 74LVC16244AEV | 74LVC16244AEV,157 | 74LVC16244AEV | | | | 3,87 | 2,58E+08 | 2 |
| 74LVCH16244ADGG | 74LVCH16244ADGG:11 | 74LVCH16244ADGG | | Always Pb-free | | 3,87 | 2,58E+08 | 1 |
| 74LVCH16244ADGG | 74LVCH16244ADGG,11 | 74LVCH16244ADGG | | Always Pb-free | | 3,87 | 2,58E+08 | 1 |
| 74LVCH16244ADL | 74LVCH16244ADL,112 | 74LVCH16244ADL | | week 13, 2005 | | 3,87 | 2,58E+08 | 1 |
| 74LVCH16244ADL | 74LVCH16244ADL,118 | 74LVCH16244ADL | | week 13, 2005 | | 3,87 | 2,58E+08 | 1 |
| 74LVCH16244AEV | 74LVCH16244AEV,118 | 74LVCH16244AEV | | | | 3,87 | 2,58E+08 | 2 |
| 74LVCH16244AEV | 74LVCH16244AEV,151 | 74LVCH16244AEV | | | | 3,87 | 2,58E+08 | 2 |
| 74LVCH16244AEV | 74LVCH16244AEV,157 | 74LVCH16244AEV | | | | 3,87 | 2,58E+08 | 2 |

The variants in the table below are discontinued. See the table [Discontinued information](#) for more information.

| Type number | Orderable part number | Chemical content | RoHS | Leadfree conversion date | RHF | IFR (FIT) | MTBF (hours) | MSL |
|-----------------|-----------------------|------------------|------|--------------------------|-----|-----------|--------------|-----|
| 74LVC16244ADGG | 74LVC16244ADGG,518 | 74LVC16244ADGG | | week 14, 2005 | | 3,87 | 2,58E+08 | 1 |
| 74LVC16244ADGG | 74LVC16244ADGG,512 | 74LVC16244ADGG | | week 14, 2005 | | 3,87 | 2,58E+08 | 1 |
| 74LVCH16244ADGG | 74LVCH16244ADGG:51 | 74LVCH16244ADGG | | week 14, 2005 | | 3,87 | 2,58E+08 | 1 |
| 74LVCH16244ADGG | 74LVCH16244ADGG,51 | 74LVCH16244ADGG | | week 14, 2005 | | 3,87 | 2,58E+08 | 1 |

Quality and reliability disclaimer

[Back to top](#)

Pricing/ordering/availability

[Hide](#)

| Type number | Ordering code (12NC) | Orderable part number | Indicative price/unit(\$) | Region | Distributor | In stock | Order quantity | Inventory date | Buy online | Samples |
|----------------|----------------------|-----------------------|---------------------------|--------|------------------------|----------|----------------|----------------|----------------------------|-------------------------------|
| 74LVC16244ADGG | 9352 351 50112 | 74LVC16244ADGG,112 | | NA | FUTURE ELECTRONICS | 3 | | 11/12/2009 | Buy online | not available |
| 74LVC16244ADGG | 9352 351 50118 | 74LVC16244ADGG,118 | | ASIA | SACL - Hong Kong/China | yes | 2000 | 11/12/2009 | Buy online | not available |
| 74LVC16244ADL | 9352 351 40112 | 74LVC16244ADL,112 | 0.7500 | | | | | | | not available |
| 74LVC16244ADL | 9352 351 40118 | 74LVC16244ADL,118 | 0.7500 | | | | | | | not available |
| 74LVC16244AEV | 9352 719 37118 | 74LVC16244AEV,118 | 2.2300 | | | | | | | Order samples |

| | | | | | | | | | | |
|-----------------|----------------|--------------------|--------|----|--------------------|-----|--|------------|------------|---------------|
| 74LVC16244AEV | 9352 719 37151 | 74LVC16244AEV,151 | 2.2300 | | | | | | | not available |
| 74LVC16244AEV | 9352 719 37157 | 74LVC16244AEV,157 | 2.2300 | | | | | | | not available |
| 74LVCH16244ADGG | 9352 384 50112 | 74LVCH16244ADGG:11 | | | | | | | | not available |
| 74LVCH16244ADGG | 9352 384 50118 | 74LVCH16244ADGG,11 | | | | | | | | not available |
| 74LVCH16244ADL | 9352 384 40112 | 74LVCH16244ADL,112 | 0.8900 | | | | | | | not available |
| 74LVCH16244ADL | 9352 384 40118 | 74LVCH16244ADL,118 | 0.8900 | NA | MOUSER ELECTRONICS | 100 | | 11/12/2009 | Buy online | Order samples |
| 74LVCH16244AEV | 9352 707 92118 | 74LVCH16244AEV,118 | 2.1300 | | | | | | | Order samples |
| 74LVCH16244AEV | 9352 707 92151 | 74LVCH16244AEV,151 | 2.1300 | | | | | | | not available |
| 74LVCH16244AEV | 9352 707 92157 | 74LVCH16244AEV,157 | 2.1300 | | | | | | | not available |

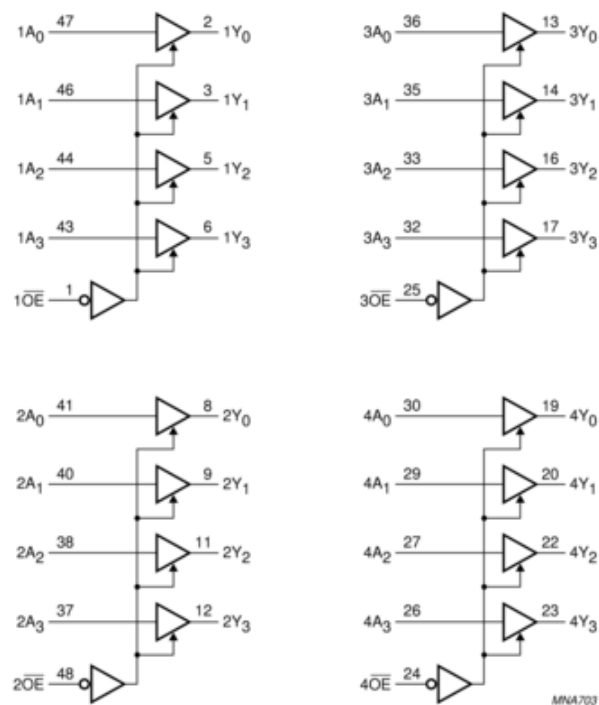
[Back to top](#)**Discontinued information**[Hide](#)

| Type number | Ordering code (12NC) | Last-time buy date | Last-time delivery date | Replacement product | DN Notice | Status | Comments |
|-----------------|----------------------|--------------------|-------------------------|---------------------|-----------|--------|----------|
| 74LVC16244ADGG | 935235150518 | | | | DN | | |
| 74LVC16244ADGG | 935235150512 | | | | DN | | |
| 74LVCH16244ADGG | 935238450518 | | | | DN | | |
| 74LVCH16244ADGG | 935238450512 | | | | DN | | |

[Back to top](#)**Applications**[Hide](#)**Related applications**

[Intelligent washing machine](#)
[Transceiver board](#)
[Main CPU board](#)

[Back to top](#)**Block diagrams/pinning**[Hide](#)

[Back to top](#)**Design support**[Hide](#)**Application Notes**

- [AN240; Interfacing 3 Volt and 5 Volt Applications \(1995-09-15\)](#)
- [AN263_2; Power considerations when using CMOS and BiCMOS logic devices \(2002-02-05\)](#)
- [AN263_2; Power considerations when using CMOS and BiCMOS logic devices \(2002-02-05\)](#)

[Back to top](#)**Parametrics/similar products**[Hide](#)

| Type number | Package | Description | Propagation Delay(ns) | Voltage | No. of Pins | Power Dissipation Considerations | Logic Switching Levels | Output Drive Capability |
|-----------------|--------------------|---|-----------------------|---------|-------------|-----------------------------------|------------------------|-------------------------|
| 74LVC16244ADGG | SOT362-1 (TSSOP48) | 3.3V 16-Bit Buffer/Line Driver; Non-Inverting (3-State) | 3.0@3.3V | 1.2-3.6 | 48 | Low Power or Battery Applications | TTL | +/- 24 mA |
| 74LVC16244ADL | SOT370-1 (SSOP48) | 3.3V 16-Bit Buffer/Line Driver; Non-Inverting (3-State) | 3.0@3.3V | 1.2-3.6 | 48 | Low Power or Battery Applications | TTL | +/- 24 mA |
| 74LVC16244AEV | SOT702-1 (VFPGA56) | 3.3V 16-Bit Buffer/Line Driver; Non-Inverting (3-State) | 3.0@3.3V | 1.2-3.6 | | Low Power or Battery Applications | TTL | +/- 24 mA |
| 74LVCH16244ADGG | SOT362-1 (TSSOP48) | 3.3V 16-Bit Buffer/Line Driver; Non-Inverting with Bus Hold (3-State) | 3.0@3.3V | 1.2-3.6 | 48 | Low Power or Battery Applications | TTL | +/- 24 mA |
| | SOT370-1 | 3.3V 16-Bit Buffer/Line Driver; Non- | | | | Low Power or Battery | | |

| | | | | | | | | |
|----------------|-----------------------|---|----------|---------|----|-----------------------------------|-----|-----------|
| 74LVCH16244ADL | (SSOP48) | Inverting with Bus Hold (3-State) | 3.0@3.3V | 1.2-3.6 | 48 | Applications | TTL | +/- 24 mA |
| 74LVCH16244AEV | SOT702-1 (VFBGA56) | 3.3V 16-Bit Buffer/Line Driver; Non-Inverting with Bus Hold (3-State) | 3.0@3.3V | 1.2-3.6 | | Low Power or Battery Applications | TTL | +/- 24 mA |

Similar products

[74LVC16244A](#); [74LVCH16244A](#) links to the similar products page containing an overview of products that are similar in function or related to the type number(s) as listed on this page. The similar products page includes products from the same catalog tree(s), relevant selection guides and products from the same functional category.

[Back to top](#)**Print/email**[Hide](#)[Email this product information](#)[Print this product information](#)[Back to top](#)**Disclaimers**[Hide](#)[General product disclaimer](#)[Quality and reliability disclaimer](#)[NXP](#) | [Privacy policy](#) | [Terms of use](#) | [Sitemap](#) | [Switch to classic mode](#)

©2006-2009 NXP Semiconductors. All rights reserved.